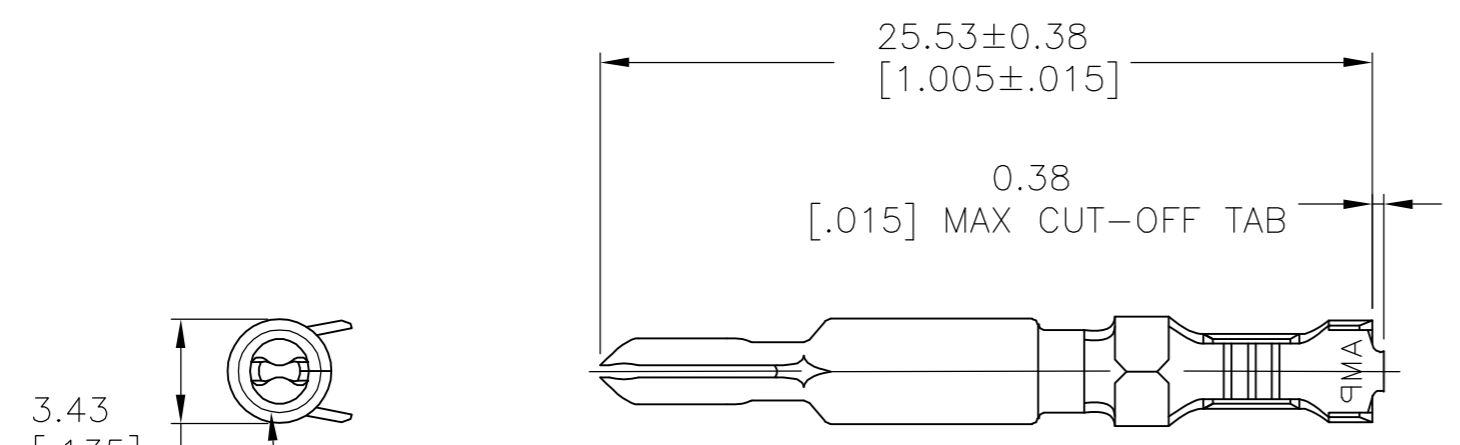
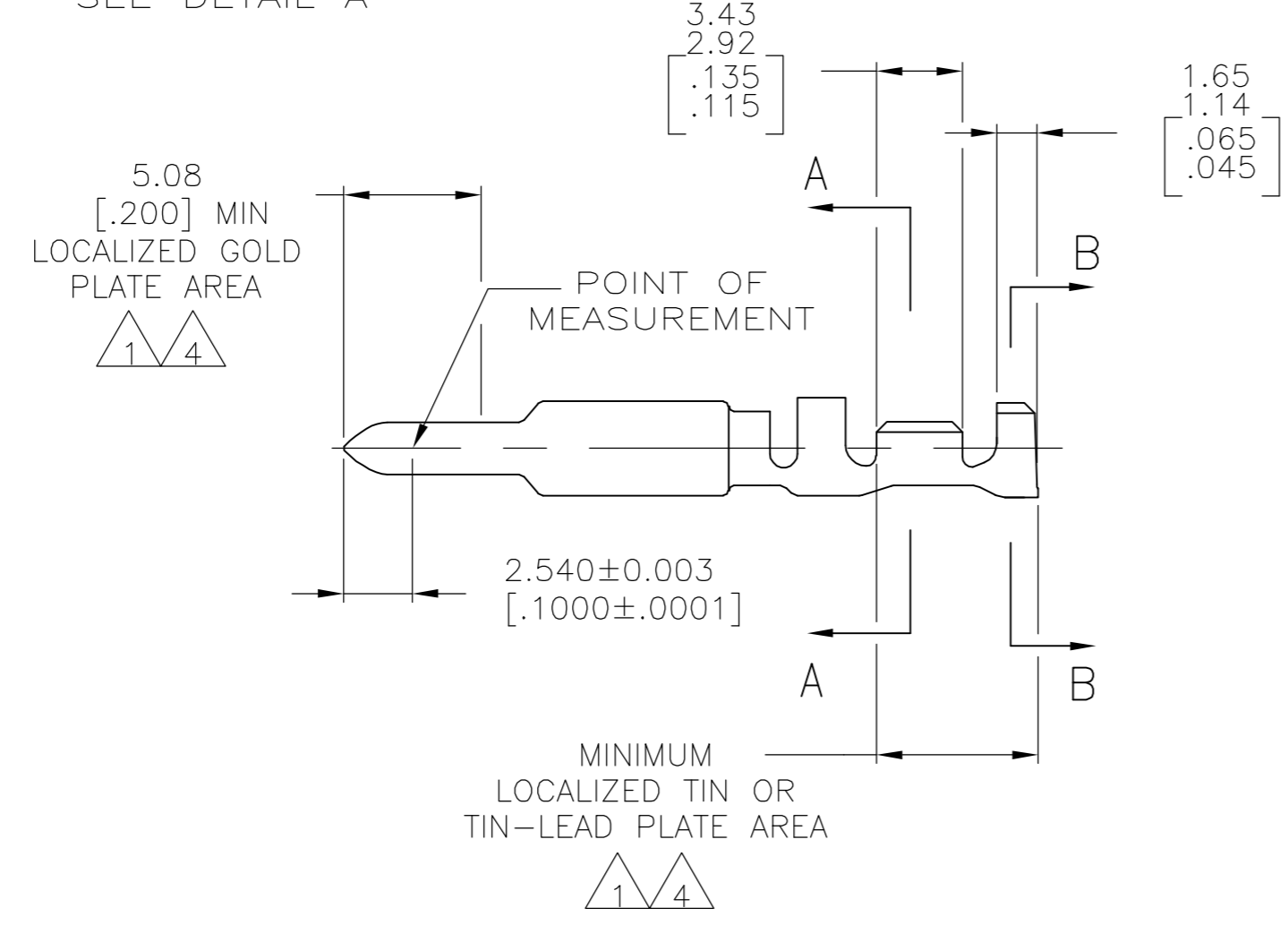


THIS DRAWING IS UNPUBLISHED. RELEASED FOR PUBLICATION  
 © COPYRIGHT BY TYCO ELECTRONICS CORPORATION. ALL RIGHTS RESERVED.

LOC		DIST		REVISIONS			
P	LTR	DESCRIPTION		DATE	DWN	APVD	
CM	00	F		EC 063B 0215 05	23SEP05	BSV	RCJ



3.43  
[.135]  
MIN  
SEE DETAIL A

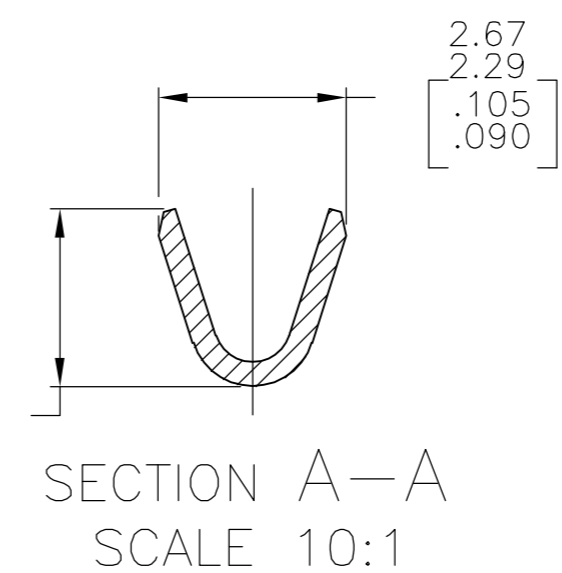


5.08  
[.200] MIN  
LOCALIZED GOLD  
PLATE AREA  
1 4

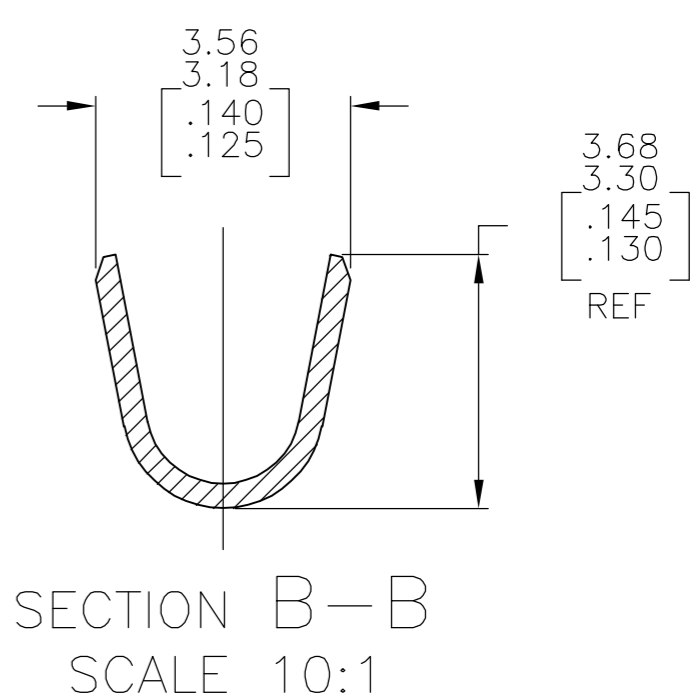
MINIMUM  
LOCALIZED TIN OR  
TIN-LEAD PLATE AREA  
1 4

1.65  
1.14  
[.065  
.045]

2.54  
2.16  
[.100  
.085]  
REF

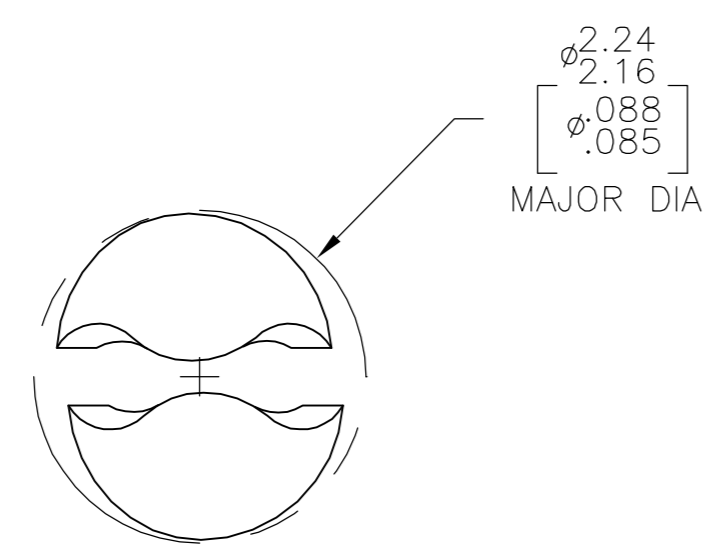


SECTION A-A  
SCALE 10:1



SECTION B-B  
SCALE 10:1

- 1. 0.00076[.000030] MIN GOLD AT POINT OF MEASUREMENT IN THE LOCALIZED GOLD PLATE AREA, 0.00127[.000050] MIN TIN-LEAD IN TIN-LEAD PLATE AREA, 0.00127[.000050] MIN NICKEL UNDERPLATE ON ENTIRE CONTACT.
- 2. WIRE RANGE: 0.2-1mm<sup>2</sup> [24-18 AWG]. INSULATION RANGE: 1.02-2.54 [.040-.100] DIA.
- 3. DIMENSIONS IN BRACKETS ARE IN INCHES.
- 4. 0.00076[.000030] MIN GOLD AT POINT OF MEASUREMENT IN THE LOCALIZED GOLD PLATE AREA, 0.00127[.000050] MIN TIN IN TIN PLATE AREA, 0.00127[.000050] MIN NICKEL UNDERPLATE ON ENTIRE CONTACT.



DETAIL A  
SCALE 20:1

FINISH	MATERIAL	PART NUMBER
GOLD 4	0.30 [.012] BRASS	1-770252-0
GOLD 1	0.30 [.012] BRASS	770252-2
PRE-TIN	0.30 [.012] BRASS	770252-1

THIS DRAWING IS A CONTROLLED DOCUMENT.		DWN K. WHITAKER 30SEP04	Tyco Electronics Corporation Harrisburg, PA 17105-3608	
DIMENSIONS: mm [INCHES]		CHK C.JONES 30SEP04	NAME PIN, LOOSE PIECE, UNIVERSAL MATE-N-LOK(TM) II	
TOLERANCES UNLESS OTHERWISE SPECIFIED: 0 PLC ± - 1 PLC ± - 2 PLC ± 0.13 [.005] 3 PLC ± - 4 PLC ± - ANGLES ± 0°30'		APVD C.JONES 30SEP04	APPLICATION SPEC	
MATERIAL		WEIGHT	SIZE A2	CAGE CODE 00779
FINISH		CUSTOMER DRAWING	DRAWING NO C=770252	RESTRICTED TO
SCALE 4:1		SHEET 1 of 1		REV F

METRIC